



Voiant CSM

critical systems monitor

Today's facilities are packed with many systems which must be operational at all times, such as power, HVAC and Life Safety. Other systems require regular in-person inspections to ensure they are working properly. Elapsed time in-between inspections can present risks.

In most cases, these legacy systems lack the ability to connect to today's networks and communications systems to report status or trouble.

Voiant CSM adds monitoring intelligence to almost any system, allowing power, temperature, flow, and status to be measured. Parameters can be set with limits and corresponding alerts. A monitoring dashboard can be viewed via computer, tablet or smartphone. Voiant can also texts alerts as well as report status via a text request.

Voiant is an ideal tool for facilities and engineering departments looking to better manage resources during normal operation and emergency situations.

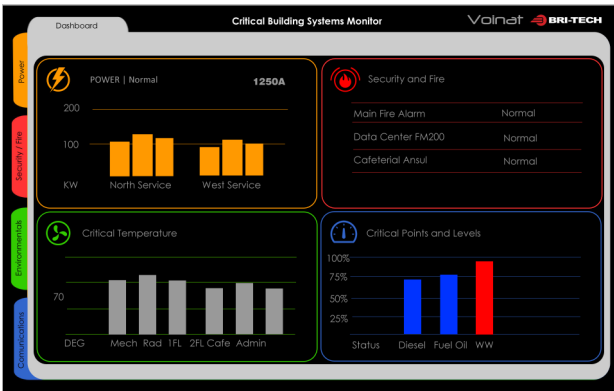
model | description

- V - MCP | Main Control Panel
- V - DGP | Data Gathering Panel
- V - PMM | Power Monitoring Module
- V - TMM | Temperature Monitoring Module
- V - FAM | Fire Alarm Module
- V - PMM | Point Monitoring Module
- V - CMM | Cellular Modem

Requires 110VAC 5A, Hardwired Internet Connection
 Size 24"Wx 44"H x 6" Deep (each)
 (can be partially recessed in wall)
 System requires field monitoring devices, points, sensors and related wiring (not included)

Screen view may vary based on systems connected
 Data subject to monitored system output





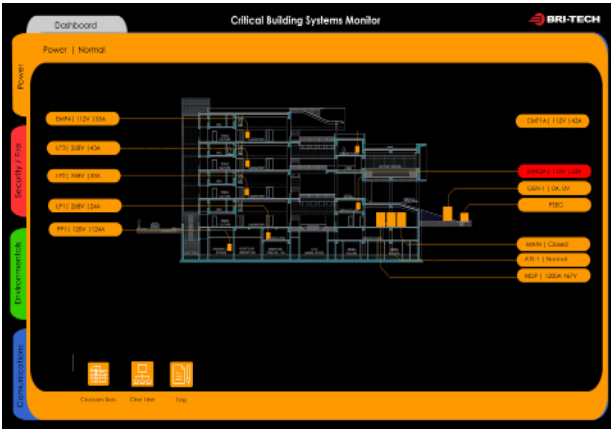
Dashboard

- Real Time System Status
- Limit Alarms for all Monitored Points
- Data Logger
- Email & Text Notifications
- Smartphone App
- Tablet and Computer View

Available Modules (not included in V-MCP)

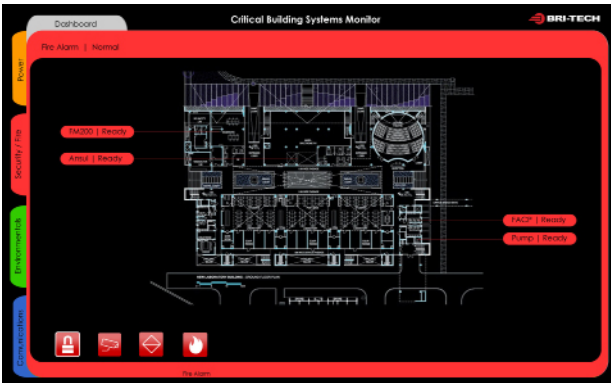
V - PMM | Power Monitoring Module

- Main Service Voltage Load
- Generator Status
- Generator Fuel Level
- Automatic Transfer Switch Status
- Panel Load
- Circuit Load



V - FAM | Fire Alarm Module

- Fire Alarm Status
- Security System Status



V - TMM | Temperature Monitoring Module

- Temp Probes
- Air Pressure
- Humidity
- Boiler Temp
- VFD Fan Status

